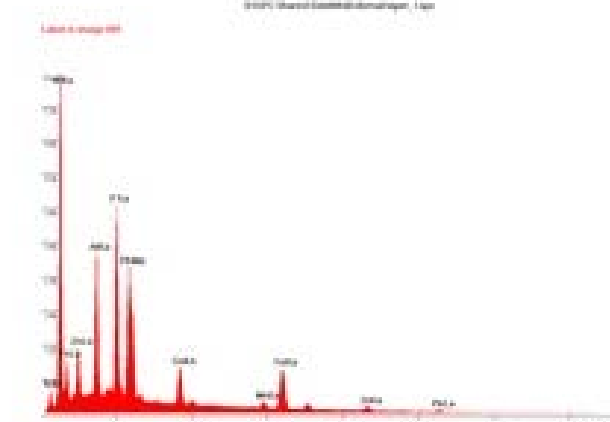
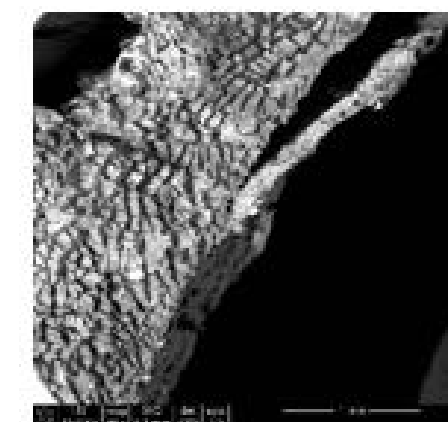


1st Annual Research Showcase and RSC Open House

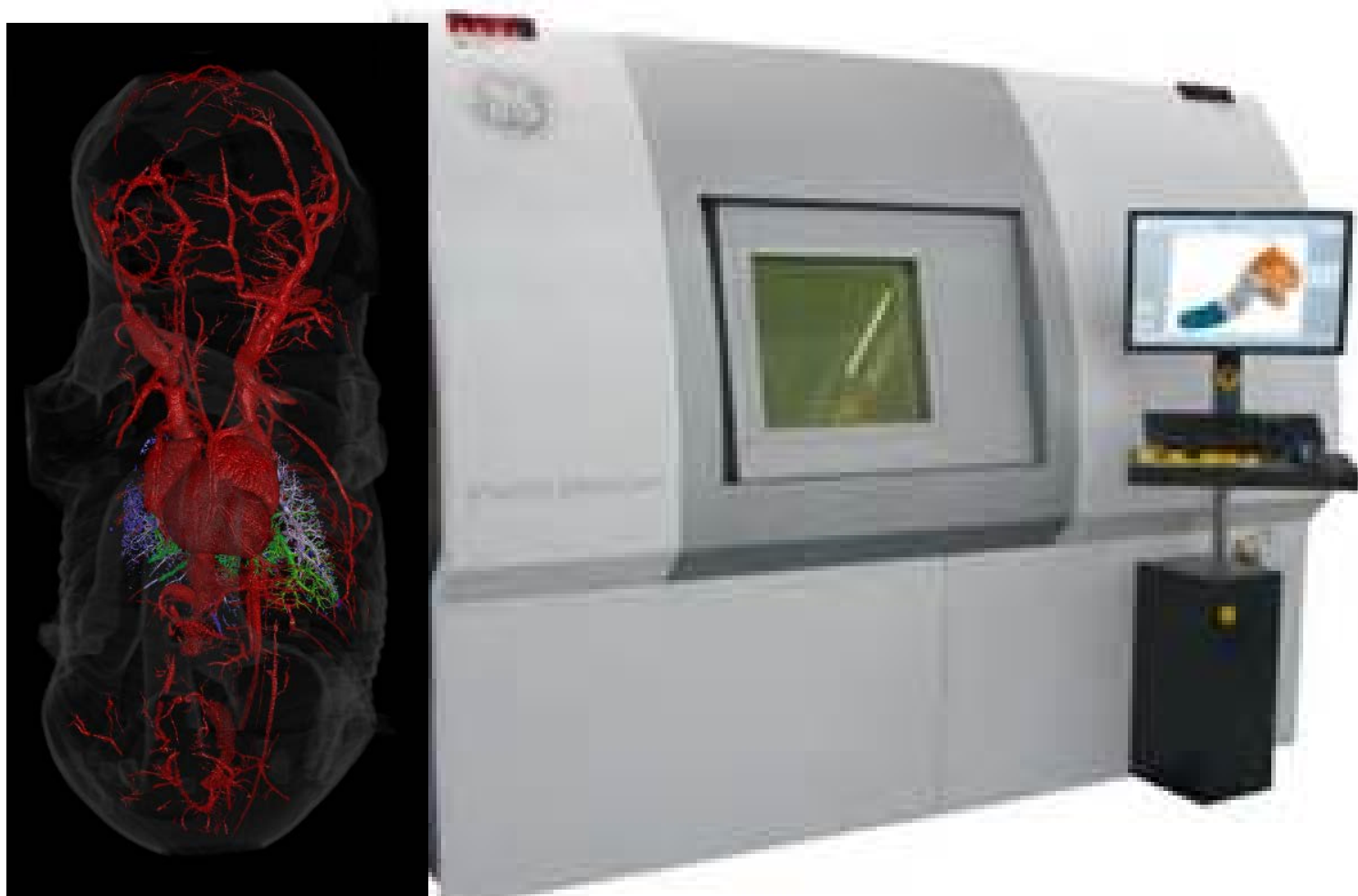
Demonstrations and Tours

9:30 a.m. & 1:00 p.m.

Scanning Electron Microscopy (Imaging)
Energy Dispersive Spectroscopy
(Elemental Analysis)



<https://rsc.aux.eng.ufl.edu/ccb/resource.asp?id=29>



<https://rsc.aux.eng.ufl.edu/ccb/resource.asp?id=79>

10:00 a.m. & 1:30 p.m.

Nano CT
(X-Ray Tomography)



<https://rsc.aux.eng.ufl.edu/ccb/resource.asp?id=87>

10:30 a.m. & 2:00 p.m.
3D Printing



11:00 a.m. & 2:30 p.m.

Clean Room Tour
(Faculty only)



<https://rsc.aux.eng.ufl.edu/ccb/resource.asp?id=120>

11:30 a.m. & 3:00 p.m.

Scanning Electron Microscopy (Imaging)
Electron Backscatter Diffraction
(Crystal Orientation Mapping)

Research Posters Display (all day) @ NRF Lobby

4:00 – 5:00 p.m. Poster Session 5:00 – 7:00 p.m. Reception