

Particle Science and Technology Building

Fire Alarm/Building Evacuation

Please plan ahead for any of your students or staff with disabilities – see http://www.ehs.ufl.edu/emergencies/disability_evacuation/

When the Building Fire Alarm System Sounds:

– You may be in danger from a fire or a toxic chemical release or an explosion .

- **Immediately begin to evacuate the building. Be safe and start moving.**
- Only if immediately accessible, grab important personal items such as keys, purse, wallet and cellphone.
- As you exit, office doors should be closed but do not have to be locked..
- Ensure all stairwell doors close behind you as you evacuate.
- As you evacuate, inform co-workers, students and visitors that they must evacuate immediately.
- If the corridor is filled with smoke, stay low and crawl out. If there is too much smoke or it is too hot then return to your office. Call 911 and inform them you are still in the building, provide them floor and room number. Wait for assistance.
- Once out of the building meet at the SW corner of the New Engineering Building (NEB).
- Please stay well away from the building when walking to the evacuation point past the East and North walls (those with ground floor lab windows).
- Attempt to determine if all occupants in your area have evacuated.

The “Do Nots”:

- Do not stop to investigate if the alarm is real or false.
- Do not use the elevator to evacuate the building.
- Do not wait to shut down your computer; however it is recommended to lock your computer if immediately accessible.
- Do not return to your work area to retrieve personal belongings.
- Do not attempt to extinguish the fire with a portable fire extinguisher unless you have been trained in its use and the fire is small.
- DO NOT RE-ENTER THE BUILDING FOR ANY REASON, until the all clear signal is given.
- As you evacuate the building it is **not** your responsibility to insure other occupants evacuate. **Getting out for your own safety is the highest priority.**
- Do not open windows or leave doors open to assist with ventilation. Firefighters will ventilate the building if necessary.

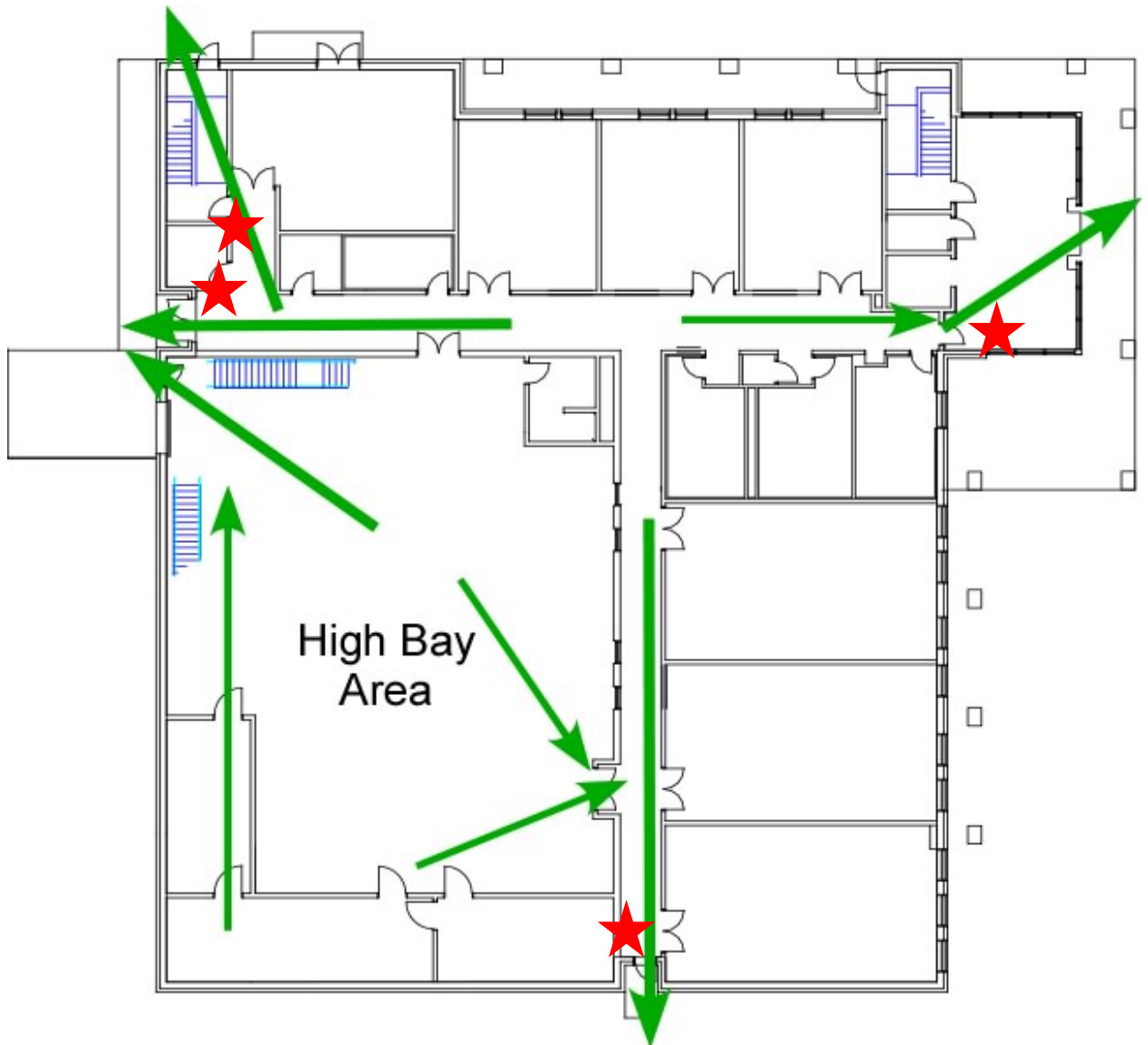
To Report a Fire or Chemical Explosion

- Pull the fire alarm and call 911.
- Remain calm while talking to the operator. Be prepared to answer several questions as to location, size of fire, your name, number of persons in building (if known) and any injuries. Remain on the line until the operator is finished.

Fire alarm pull stations are normally located near each fire exit and those for PS&T are indicated in the following diagrams.

The major source for this document is UF Environmental Health and Safety.

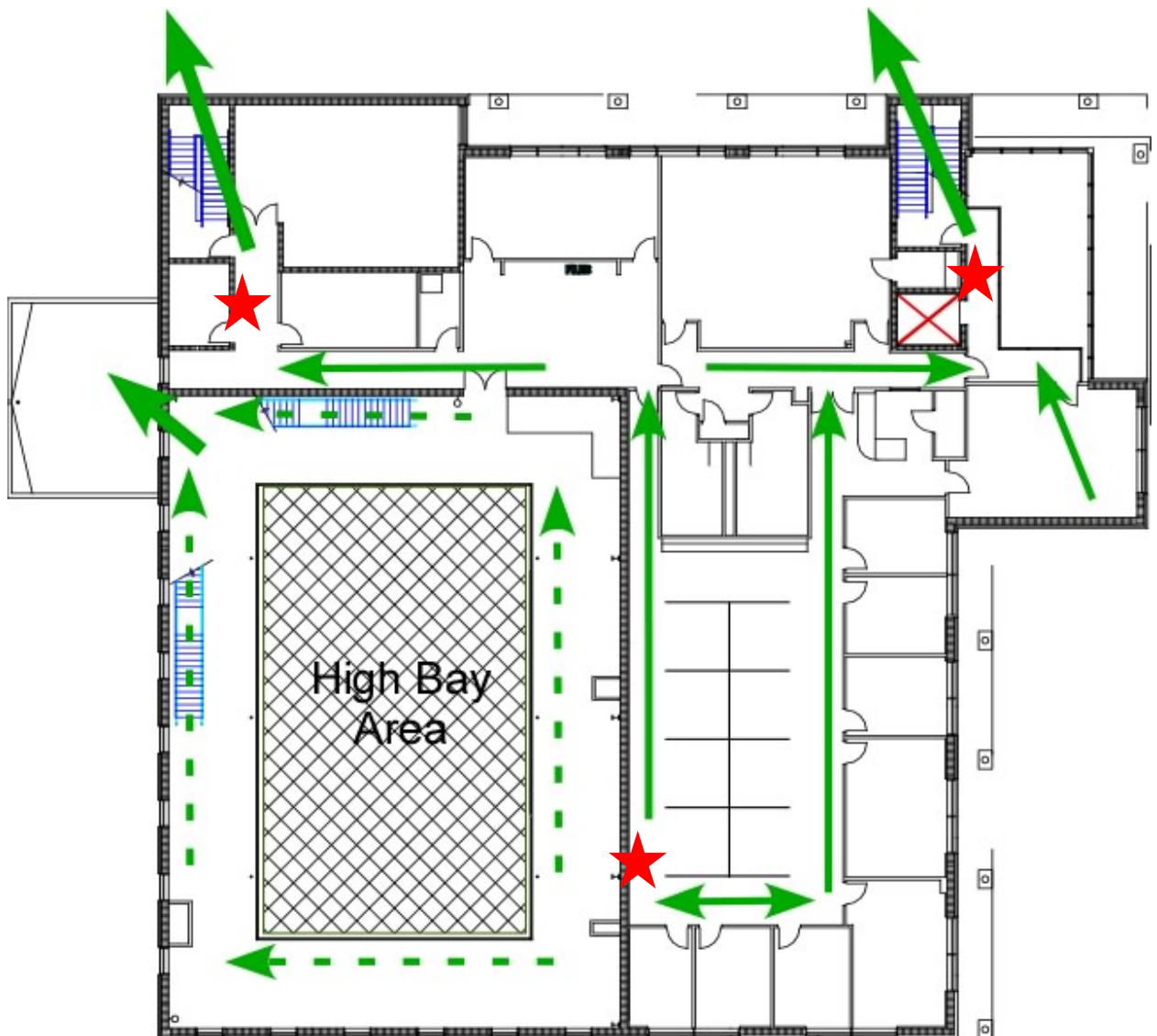
Particle Science and Technology Building Fire Alarm/Building Evacuation - Ground Floor Evacuation Routes



★ Pull stations for the fire alarm system

Note that there are no pull stations in the high bay area. If a fire starts in this area, call 911 after evacuating the area

Particle Science and Technology Building Fire Alarm/Building Evacuation - Second Floor Evacuation Routes



★ Pull stations for the fire alarm system

Note that there are no pull stations in the mezzanine around the high bay area. If a fire starts in this area call 911 after evacuating the area.

Particle Science and Technology Building Fire Alarm/Building Evacuation - Routes to Evacuation Point

